
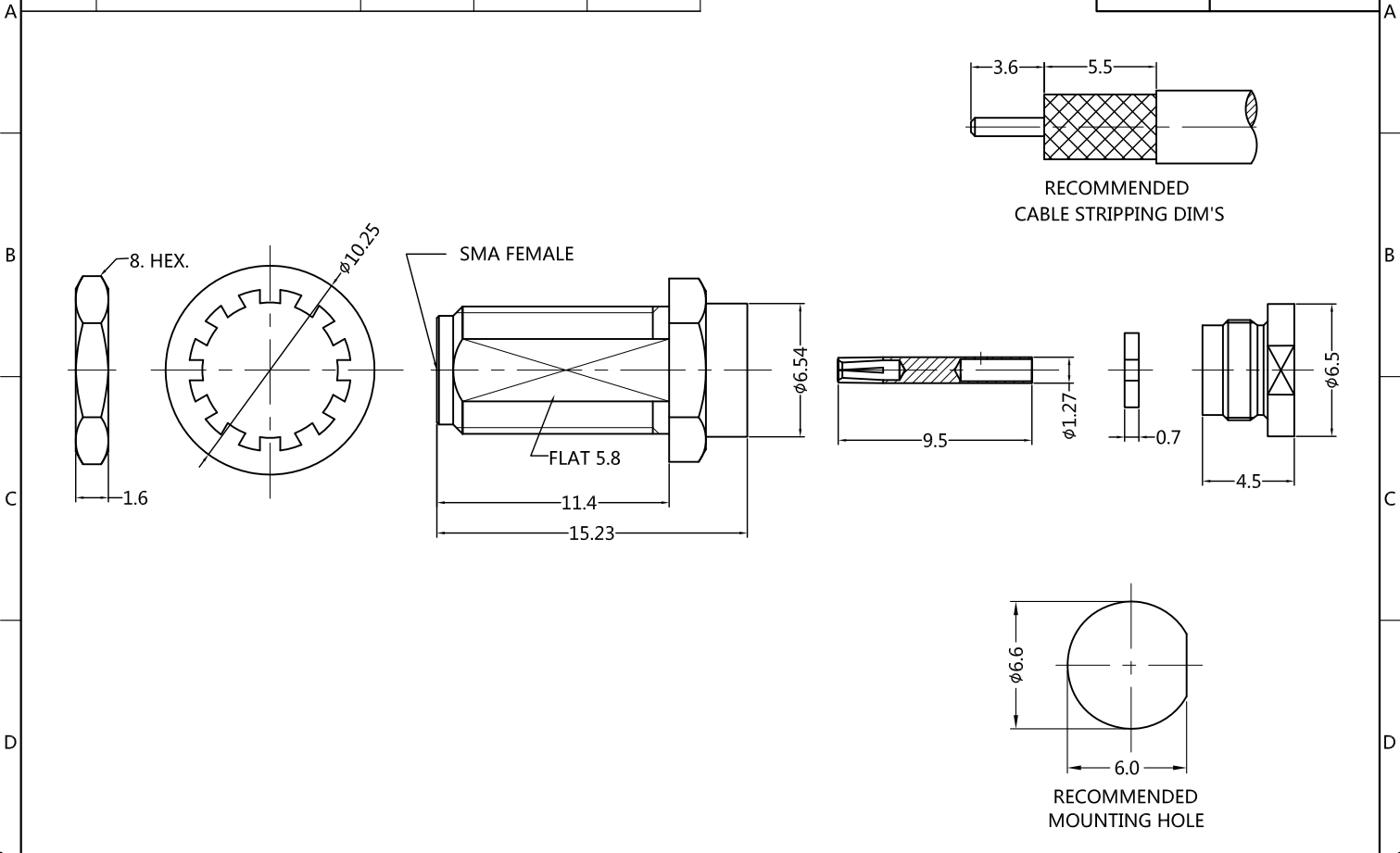


REV.	DESCRIPTION	ECN NO.	NAME	DATE	 ALL PARTS MUST MEET TO RoHS REQUIREMENTS
0	FIRST EDITION	N/A	QGZ	2020-07-07	



MATERIALS AND PLATING		UNIT: MICRO-INCHES
BODY	BRASS C3604	GOLD/NICKEL/COPPER
CONTACT PIN	Be-Cu C17300	GOLD/NICKEL /COPPER
INSULATOR	PTFE ASTM-D-1710	N/A
NUT	BRASS C3604	GOLD/NICKEL/COPPER
LOCK WASHER	BRASS	GOLD/NICKEL/COPPER

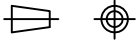

ELECTRICAL CHARACTERISTICS	
IMPEDANCE	50 Ω
VOLTAGE RATING	335 V(rms)
FREQUENCY RANGE	0 ~ 13.5 GHz
DIELECTRIC WITHSTANDING VOLTAGE	>500 V
CONTACT RESISTANCE	CENTER CONTACT <3.0 m Ω
	OUTER CONTACT <2.0 m Ω
INSULATION RESISTANCE	>5000 M Ω
INSERTION LOSS	<0.1x $\sqrt{(F \text{ GHz})}$ dB
RETURN LOSS	>23.0 db
3RD INTERMODULATION	N/A

MECHANICAL CHARACTERISTICS	
FORCE TO ENGAGE AND DISENGAGE	N/A
CENTER CONTACT RETENTION FORCE	N/A
RECOMMENDED COUPLING TORQUE	N/A
COUPLING NUT RETENTION FORCE	N/A
DURABILITY	>500cycles

ENVIRONMENTAL PARAMETER	
TEMPERATURE RANGE	-40 °C~+125 °C
THERMAL SHOCK	MIL- STD 202, Meth. 107,Cond. B
VIBRATION	MIL- STD 202, Meth. 204,Cond. D
SHOCK	MIL- STD 202, Meth. 213,Cond. I

CUSTOMER OUTLINE DRAWING

*** CUSTOMER OUTLINE DRAWING**

UNLESS OTHERWISE SPECIFIED: 1) EDGES : C0.15 MAX ; 2) REMOVE ALL BURRS ; 3) SURFACE ROUGHNESS : Ra1.6 ; 4) UNITS : mm ; 5) DIMENSIONS TOLERANCES DECIMALS : .x ± 0.3 .xx ± 0.2 .xxx ± 0.1 ; ANGLES : $\pm 5^\circ$.	THIRD ANGLE PROJECTION		 TITLE : SMA FEMALE S/T FOR FLEXIFORM 402 LX, 50 Ω DRAWING NO. : 5MAF15S-A347 COMPANY WEBSITE : www.slkcorp.com	
	APPROVED :			CUSTOMER P/N :
	CHECKED :	SCALE :		1 : 1
	DRAWING :	DATE :		2020-07-07
PAGE : 1/1				