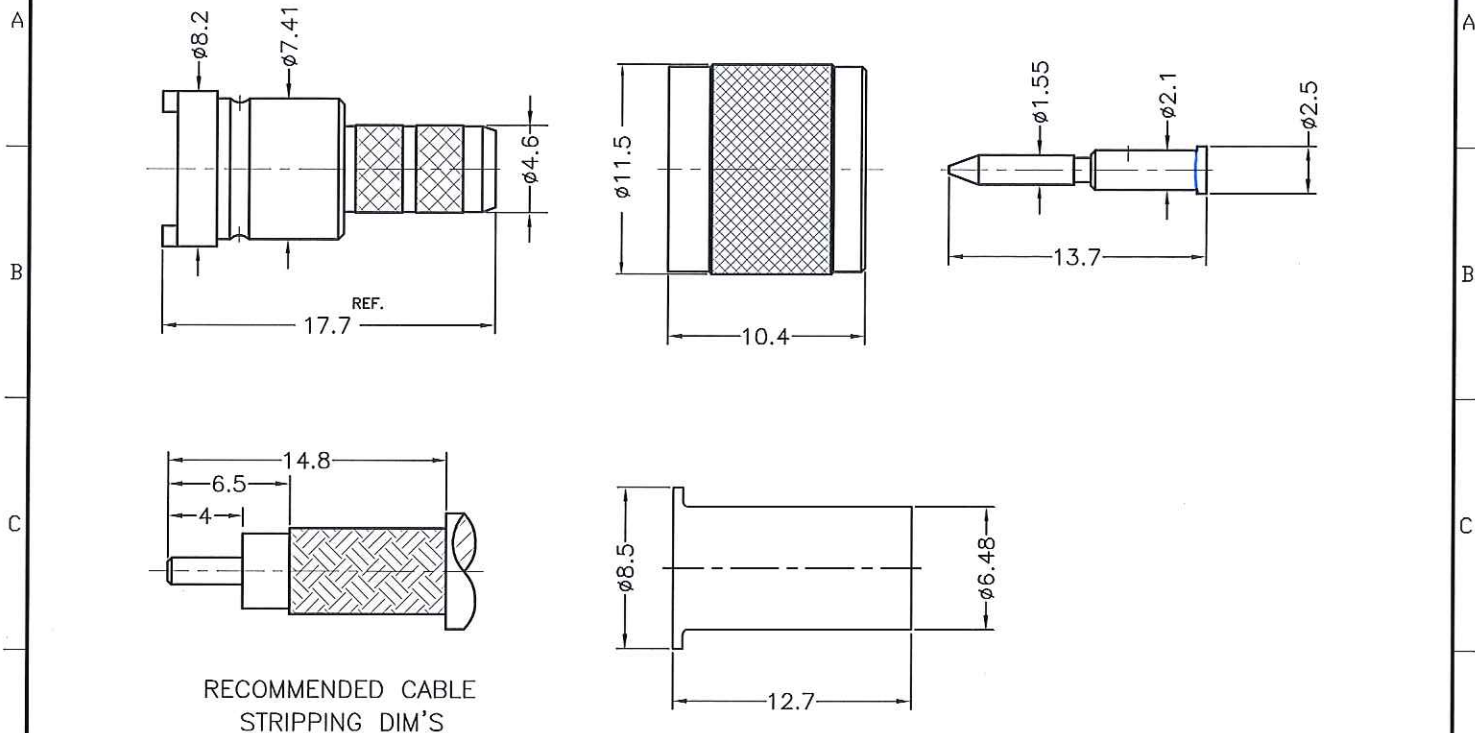


1	2	3	4	5	6
版本(REV.)	描述(DESCRIPTION)	变更号(ECN NO.)	签名(NAME)	日期 DATE)	
0	FIRST EDITION	N/A	Dezhi.Wang	2018-11-13	



所有物料及工艺
必须符合
ROHS要求

ALL PARTS MUST
MEET TO RoHS
REQUIREMENTS



材料与电镀(MATERIALS AND PLATING) UNIT: MICRO-INCHES		
主体 BODY	黄铜 (BRASS C3604) BRASS C3604	铜底, 镀镍100μ " / NICKEL 100 u"/COPPER
中心针 CONTACT PIN	黄铜 (BRASS C3604) BRASS C3604	镍底, 镀金10μ " / GOLD 10μ " / NICKEL
绝缘体 INSULATOR	聚四氟乙烯 TEFLON MIL-P-19468	N/A
铜管 FERRULE	紫铜 COPPER	铜底, 镀镍100μ " / NICKEL 100 u"/COPPER
其它 OTHER	黄铜 (BRASS C3604) BRASS C3604	铜底, 镀镍100μ " / NICKEL 100 u"/COPPER

电气性能 (ELECTRICAL CHARACTERISTICS)	
特性阻抗 (Impedance)	50 Ω
工作电压 (Voltage rating)	500V(rms)
频率范围 (Frequency range)	0 ~ 6GHz
介质耐压 (Dielectric withstanding voltage)	750 V
接触电阻 (Contact resistance)	内导体 (Center contact) ≤3.0mΩ 外导体 (Outer contact) ≤2.0mΩ
绝缘电阻 (Insulation resistance)	≥5000MΩ
插入损耗 (Insertion loss)	According as the cable
射频泄漏 (RF- leakage)	N/A
电压驻波比 (VSWR)	<1.35 MAX. (0~2.5GHz)
三阶互调 (3rd Intermodulation)	N/A

机械特性 (MECHANICAL CHARACTERISTICS)	
插拔力 (Force to engage and disengage)	N/A
中心针保持力 (Center contact retention force)	>6lbs
螺母扭力 (Recommended coupling torque)	N/A
螺母拉力 (Coupling nut retention force)	N/A
机械耐久性 (Durability)	≥ 500 cycles

环境参数 (ENVIRONMENTAL CHARACTERISTICS)	
工作温度 (Temperature range)	-55°C ~ +125°C

CUSTOMER DRAWING

CUSTOMER OUTLINE DRAWING

除非特别声明 (UNLESS OTHERWISE SPECIFIED) :
 1)未注倒角 (EDGES) : C0.15 MAX;
 2)去除各处毛刺 (REMOVE ALL BURRS);
 3)表面光洁度 (SURFACE ROUGHNESS) : Ra1.6;
 4)单位: 毫米 (UNITS:mm);
 5)未标注尺寸公差 (DIMENSIONS TOLERANCES)
 小数 (DECIMALS) .x ±0.3 .xx ±0.2 .xxx±0.1
 角度 (ANGLES) ±5°

第三视角
(THIRD ANGLE PROJECTION)

批准(APPROVED):
Demuel 11/13

审核(CHECKED):

制图(DRAWING):
冯德巧 11/13

客户料号(CUSTOMER P/N):
-

比例(SCALE):
2:1

日期 DATE): 2018-11-13

公司网址(COMPANY WEBSITE): www.slkcorp.com

标题(TITLE): "MU" TYPE ST MALE-50 Ohm
FOR RG-58C/U CABLE

图号(DRAWING NO.):
5MUM11S-A41-001