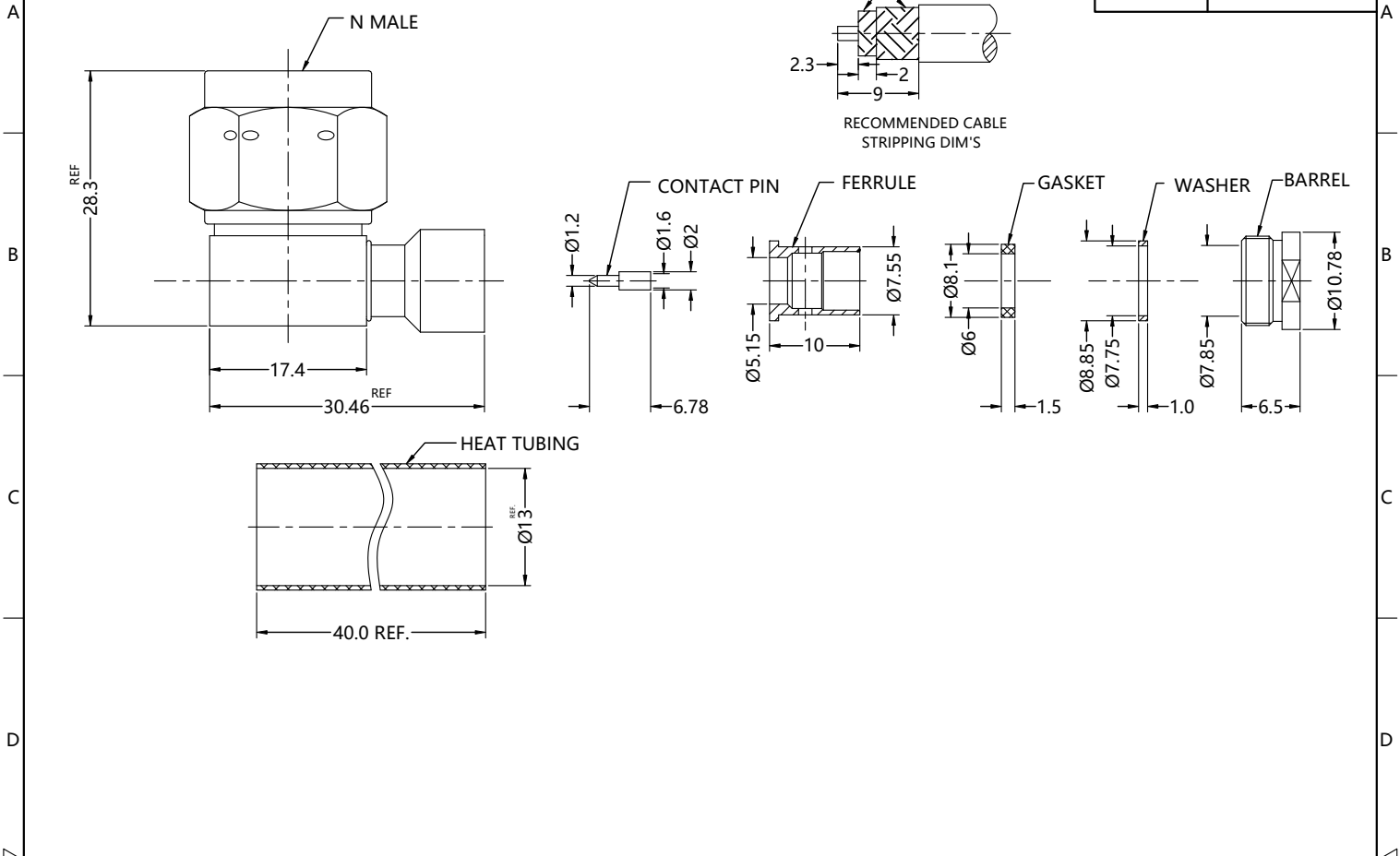


REV.	DESCRIPTION	ECN NO.	NAME	DATE
0	FIRST EDITION	N/A	LZF	2022-09-05



ALL PARTS MUST MEET TO RoHS REQUIREMENTS



MATERIALS AND PLATING		UNIT: MICRO-INCHES
PART NAME	MATERIALS	PLATING
BODY	BRASS C3604	NICKEL 200 u" MIN./COPPER
INSULATOR	PTFE ASTM-D-1710	N/A
CONTACT PIN	PHOSPHOR BRONZE	PL.GOLD50 u"/NICKEL/COPPER
GASKET	SILICONE	N/A

ELECTRICAL CHARACTERISTICS	
IMPEDANCE	50 Ω
VOLTAGE RATING	1000 V(rms)
FREQUENCY RANGE	DC~6GHz
DIELECTRIC WITHSTANDING VOLTAGE	>1500 V
CONTACT RESISTANCE	CENTER CONTACT <1.0mΩ
	OUTER CONTACT <0.2 mΩ
INSULATION RESISTANCE	>5000MΩ
INSERTION LOSS	N/A
VSWR	<1.25(DC-6GHz)
3RD INTERMODULATION	N/A

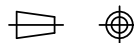
MECHANICAL CHARACTERISTICS	
FORCE TO ENGAGE AND DISENGAGE	N/A
CENTER CONTACT RETENTION FORCE	6 lbs MIN.
RECOMMENDED COUPLING TORQUE	>30 in-lbs
COUPLING NUT RETENTION FORCE	>100 in-lbs
DURABILITY	N/A

ENVIRONMENTAL PARAMETER	
TEMPERATURE RANGE	-55°C-+165°C
THERMAL SHOCK	MIL- STD 202, Meth. 107,Cond. B
VIBRATION	MIL- STD 202, Meth. 204,Cond. B
SHOCK	MIL- STD 202, Meth. 213,Cond. I

**\* CUSTOMER OUTLINE DRAWING**

UNLESS OTHERWISE SPECIFIED:  
 1) EDGES : C0.15 MAX ;  
 2) REMOVE ALL BURRS ;  
 3) SURFACE ROUGHNESS : Ra0.8 ;  
 4) UNITS : mm ;  
 5) DIMENSIONS TOLERANCES  
 DECIMALS : .x ±0.5 .xx ±0.3 .xxx±0.2;  
 ANGLES : ±8°.

THIRD ANGLE PROJECTION



APPROVED :

CUSTOMER P/N :

CHECKED :

SCALE :

1 : 1

DRAWING :

LZF

DATE : 2022-09-05

PAGE : 1/1



TITLE : N MALE R/A CONNECTOR FOR 9583 SFT 304 CABLE

DRAWING NO. : 5NCM15R-A71-001

COMPANY WEBSITE : www.slkcorp.com

CUSTOMER OUTLINE DRAWING